

Technical specifications

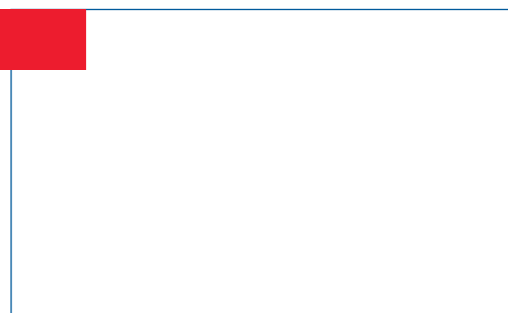
Density		Remark
Number of birds/pan	14	
Flextra pan		
Material	Polypropene	
Diameter	316 mm	
Height edge	52 mm	
Content	approximately 160 g per charge	(depending on feed composition)
Circumference	993 mm	
System		
Power drive unit	0,75 kW	
r.p.m.	500	
Capacity	Ca 600 kg/h	
Diameter feeder tube	44,5 mm	
Power drive unit dosing	0,18 kW	
r.p.m.	100	
Diameter dosing tube	44,5 mm	
Content hopper	175 L	
Max. length feeding line/drive unit	75 m	
Number of pans per 3 m section	4 pans	



Flextra[®]
EXCELLENCE IN FEEDING

- Optimizes rearing of breeders
- Avoids stress while feeding
- Secures uniformity of the flock
- Improves technical and financial results
- Guarantees the highest possible uniformity

Dealer



V2006606

VDL Agrotech 

PO. Box 8822, 5605 LV Eindhoven, T: +31 (0)40 29 25 500
www.vdlagrotech.com, info@vdlagrotech.nl, F: +31 (0)40 29 25 501

VDL Agrotech



Flextra system, designed to serve professional rearing farms!

One week old chicks



Flextra pan

- Low edge of the bottom makes the pan easily accessible for one day old chicks
- Secures equal distribution of feed in the pan due to special design of the bottom
- Each bird has its own separate feed compartment which promotes less stress to the birds
- Prevents spillage of feed
- All pans are filled simultaneously

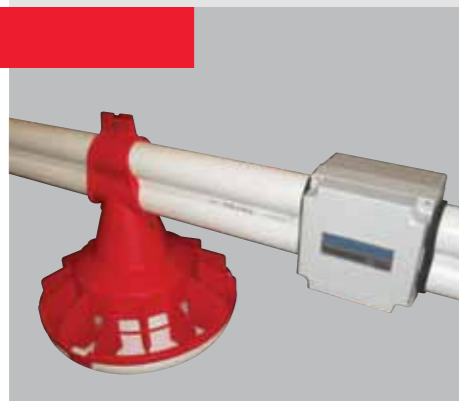
Unique concept



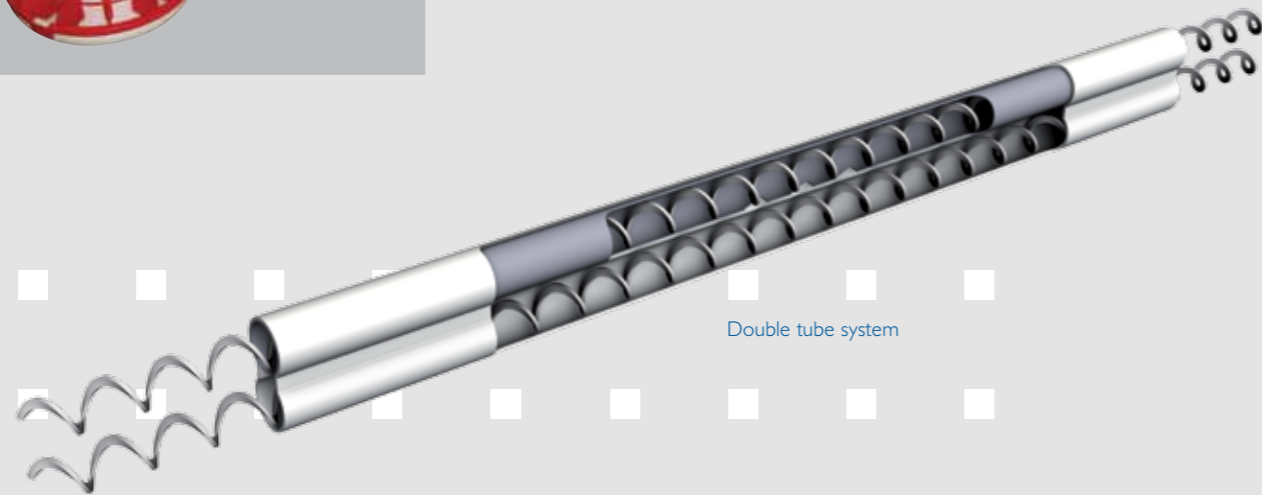
Unique concept

- Double tube with two drive units secures fast simultaneous filling of the feed pans
- Drive units standard equipped with motor switch security
- The system operates independently by use of own computer controller with FLX-2 or FLX-3 program
- Feed delivery is automatically controlled by computer
- No weighing system required

Durable



Double tube system



Computer with FLX-2/FLX-3 program

- Can control 5 silos. This makes it possible to mix different types of feed
- Registers and displays the total water consumption
- Keeps accurate records of the amount of feed supplied
- Secures an exact weight control
- Controls fast feed distribution

Durable

- All materials used are of high quality and durable contributing to a long life of the system

Excellent results

- Secures a higher uniformity of the flock
- Reduces risk of disease problems due to less stress while feeding

Uniform flock



8 week old birds



Computer Flextra



Drive unit dosing line